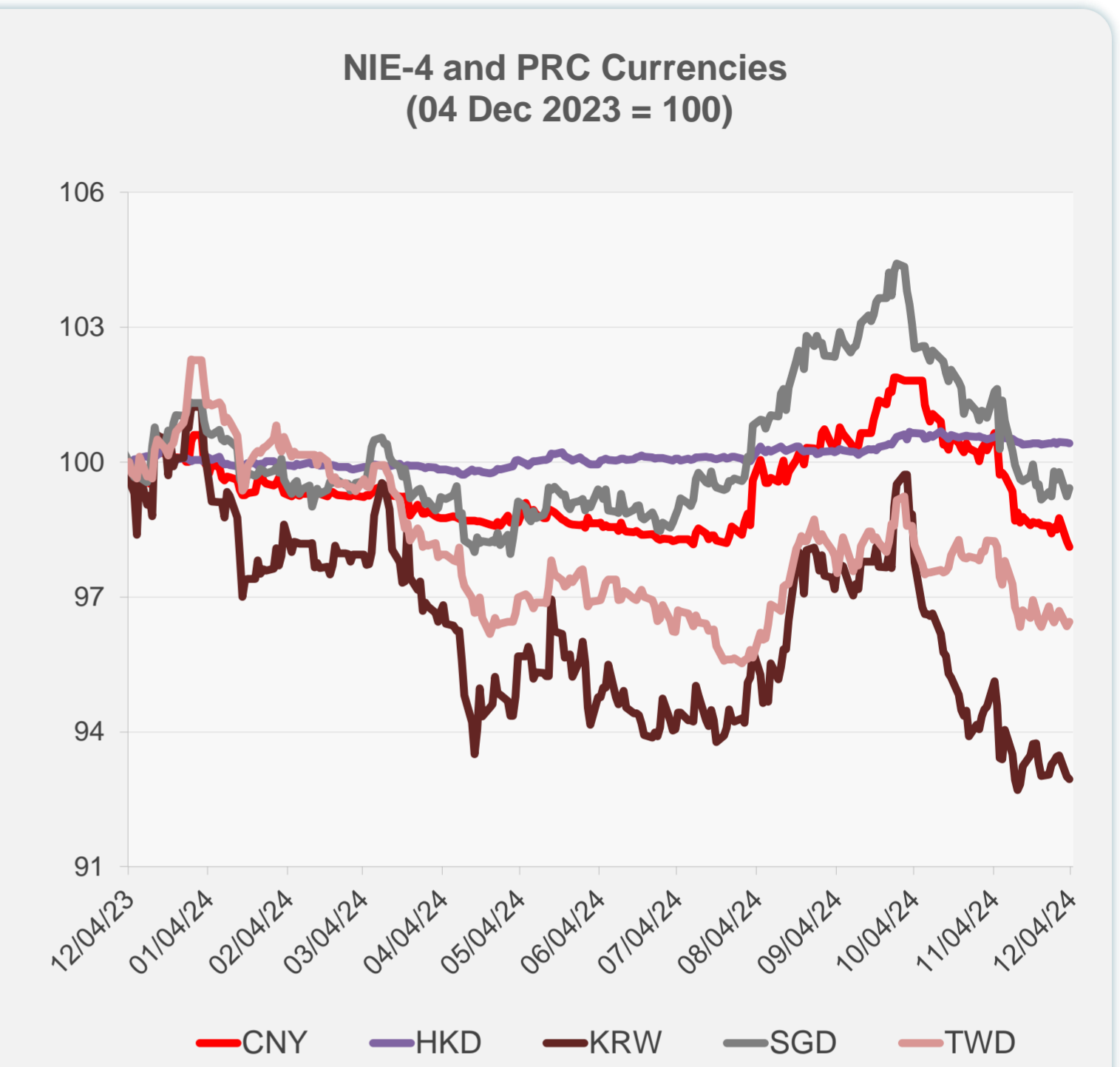
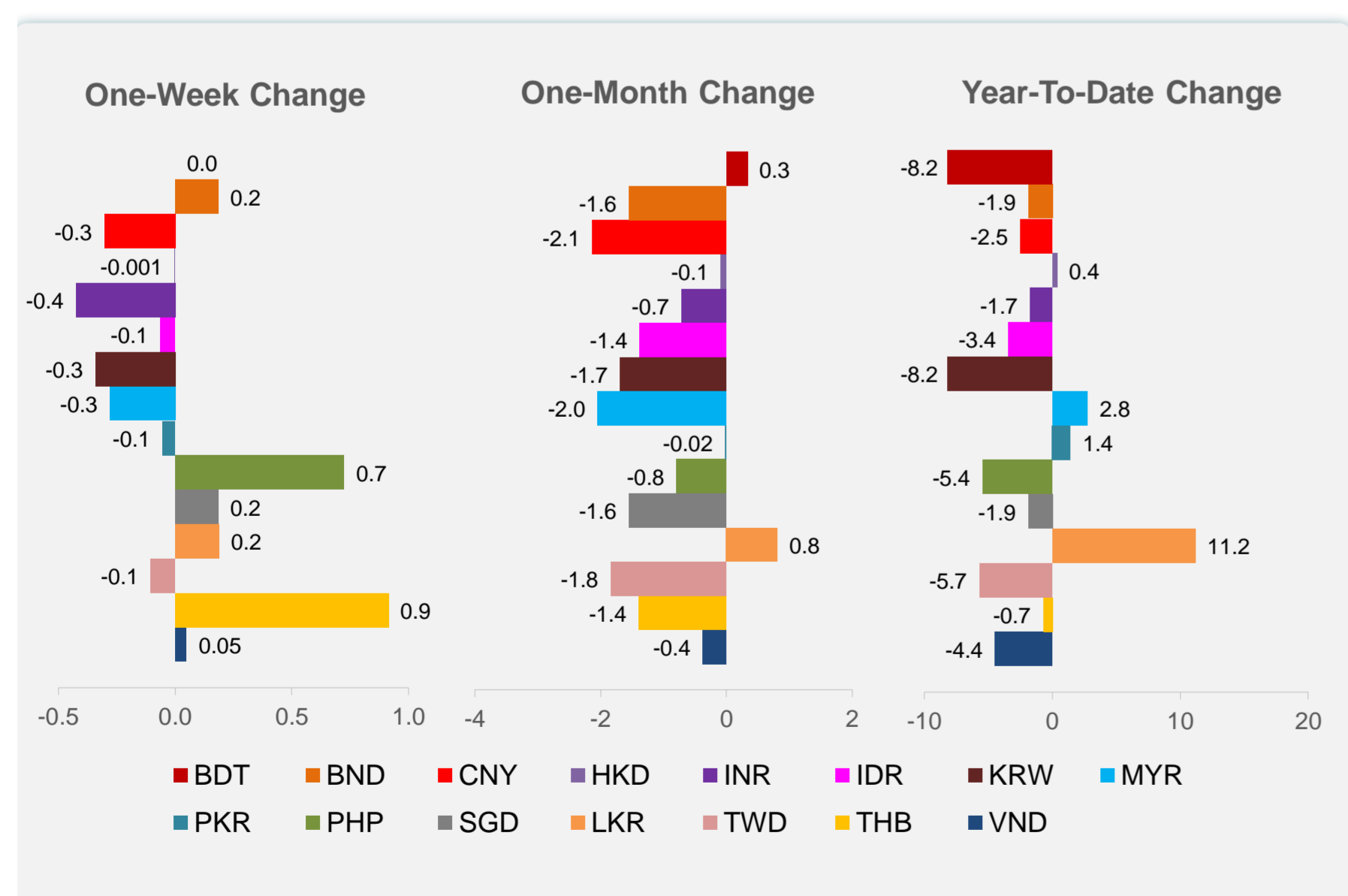
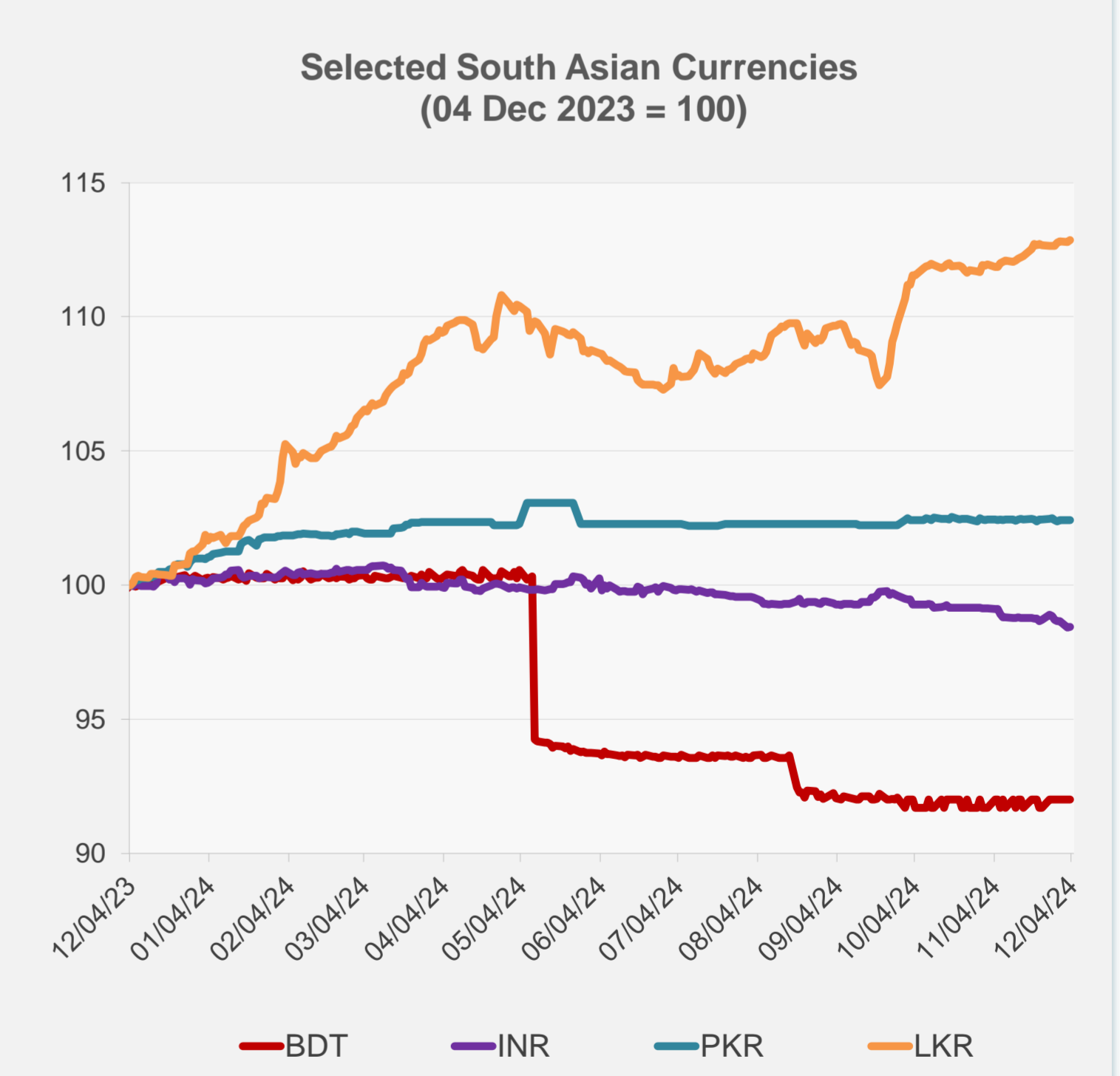
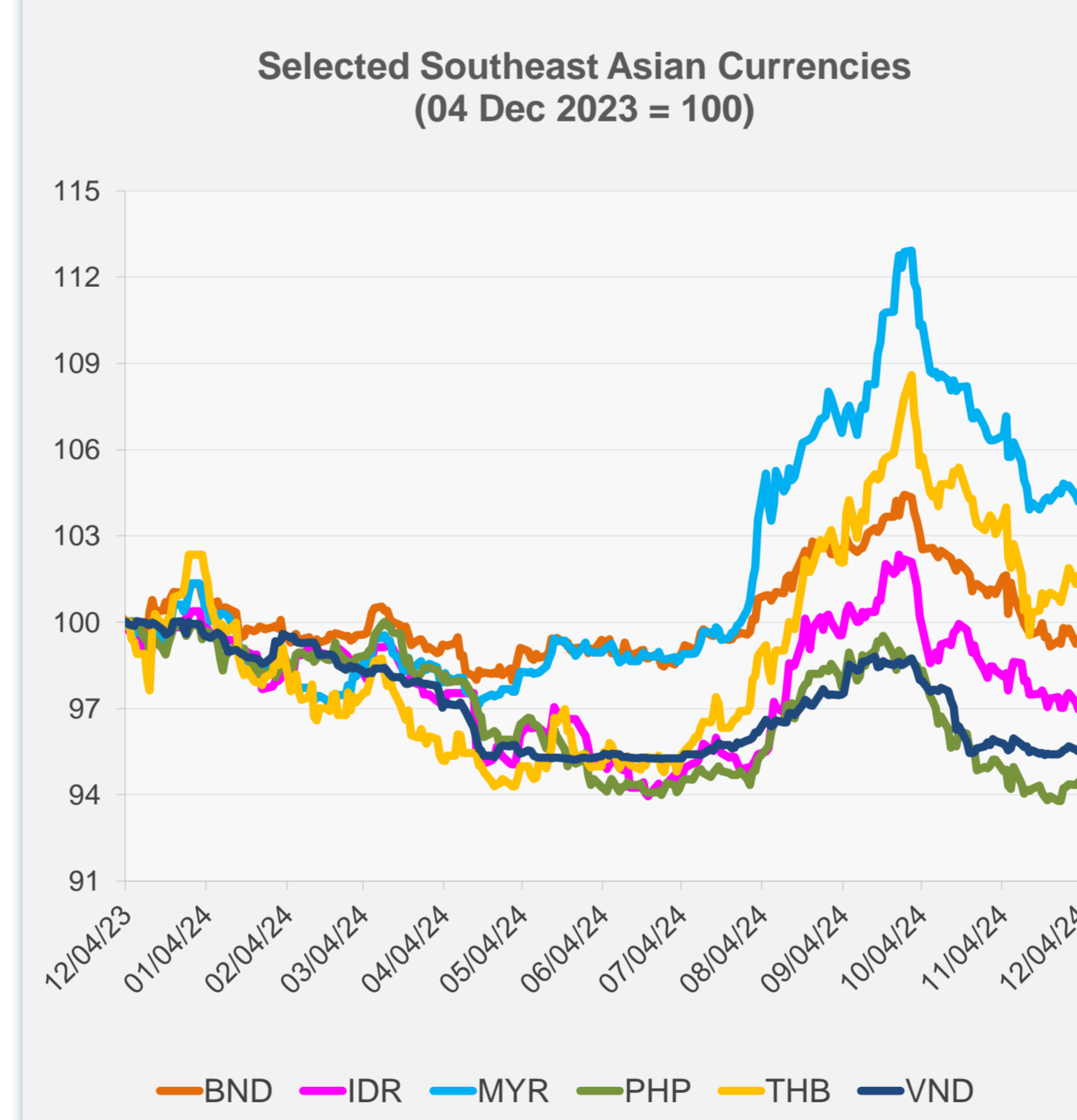


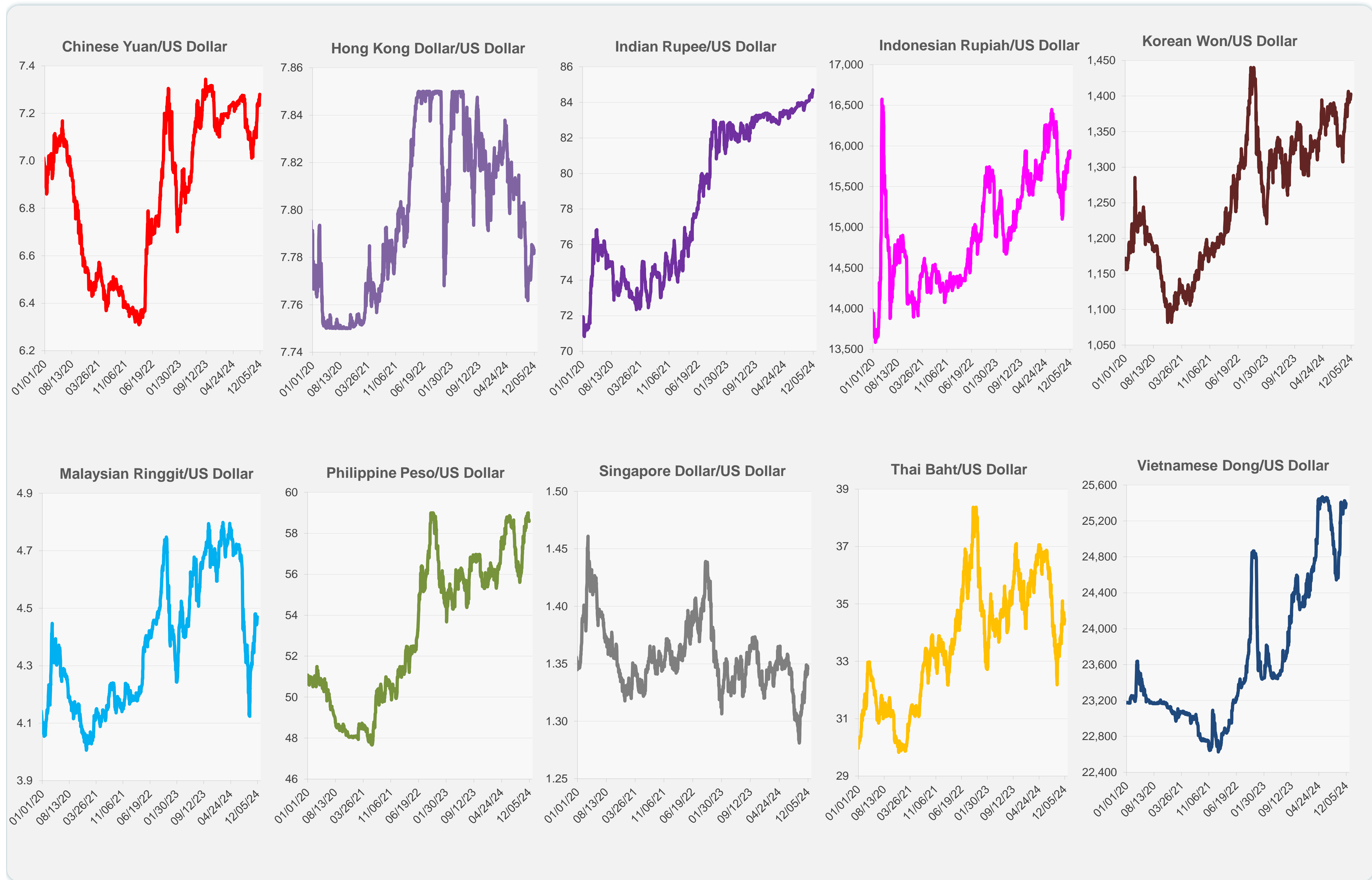
| | Latest Closing | % change from Previous Day | % change from 01-Jan-24 |
|------------------------------|----------------|----------------------------|-------------------------|
| Euro | 0.95 | 0.46 | -4.78 |
| Japanese yen (JPY) | 149.18 | 0.50 | -5.55 |
| Bangladeshi taka (BDT) | 119.50 | 0.00 | -8.16 |
| Brunei dollar (BND) | 1.35 | 0.19 | -1.87 |
| Chinese yuan (CNY) | 7.28 | -0.13 | -2.48 |
| Hong Kong dollar (HKD) | 7.78 | -0.02 | 0.36 |
| Indian rupee (INR) | 84.69 | 0.01 | -1.72 |
| Indonesian rupiah (IDR) | 15,940.00 | -0.25 | -3.41 |
| Korean won (KRW) | 1,402.95 | -0.06 | -8.19 |
| Malaysian ringgit (MYR) | 4.47 | -0.22 | 2.77 |
| Pakistan rupee (PKR) | 277.88 | 0.01 | 1.43 |
| Philippine peso (PHP) | 58.58 | 0.14 | -5.44 |
| Singapore dollar (SGD) | 1.35 | 0.19 | -1.87 |
| Sri Lanka rupee (LKR) | 290.47 | 0.06 | 11.19 |
| Taipei,China NT dollar (TWD) | 32.56 | 0.11 | -5.69 |
| Thai baht (THB) | 34.39 | 0.30 | -0.71 |
| Vietnamese dong (VND) | 25,395.50 | -0.07 | -4.44 |



NIE = Newly Industrialized Economies



Note: Negative/Decreasing values indicate depreciation of local currency, and positive/increasing values indicate appreciation.
Source: ADB calculations using data from Haver Analytics.

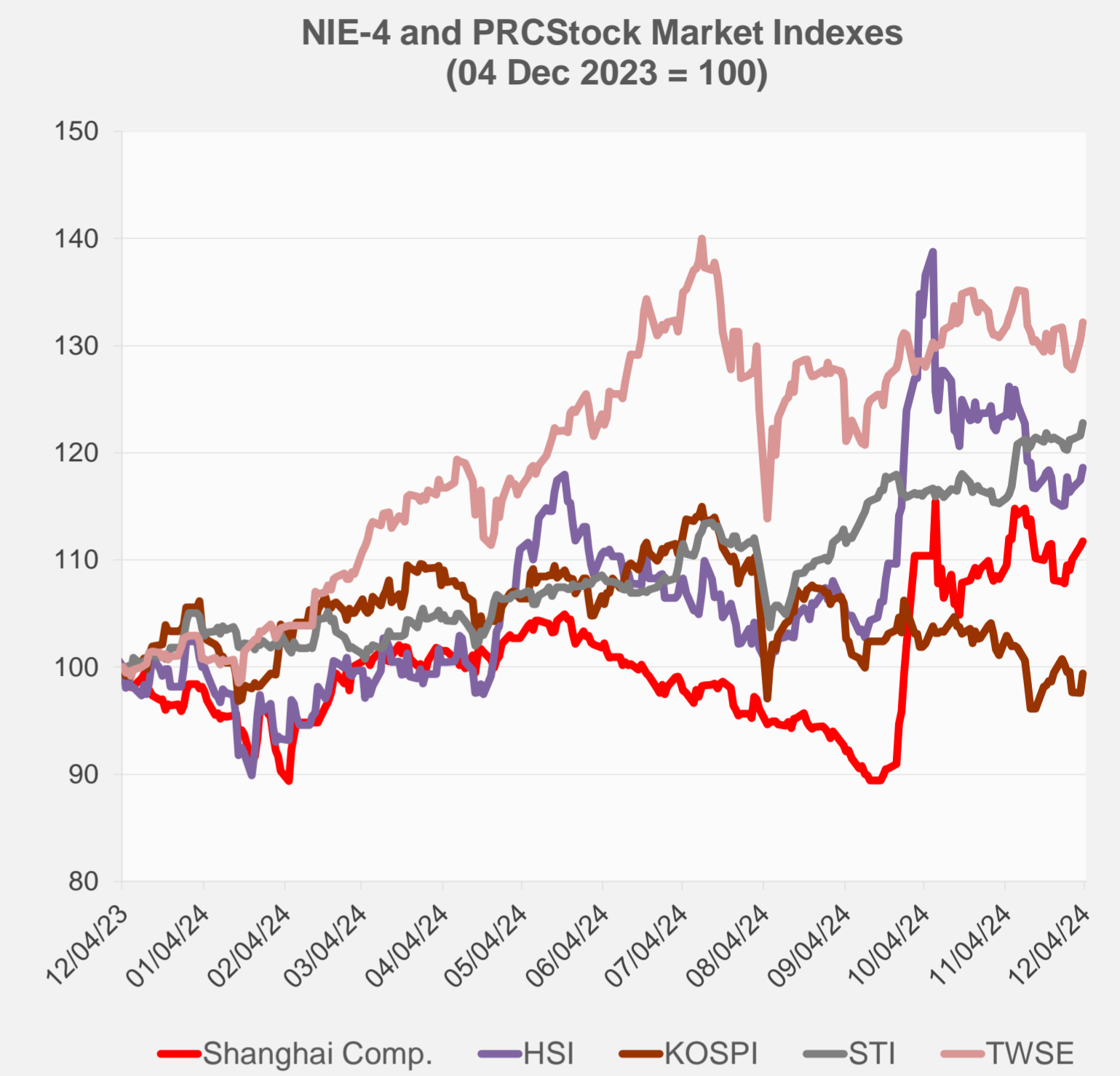
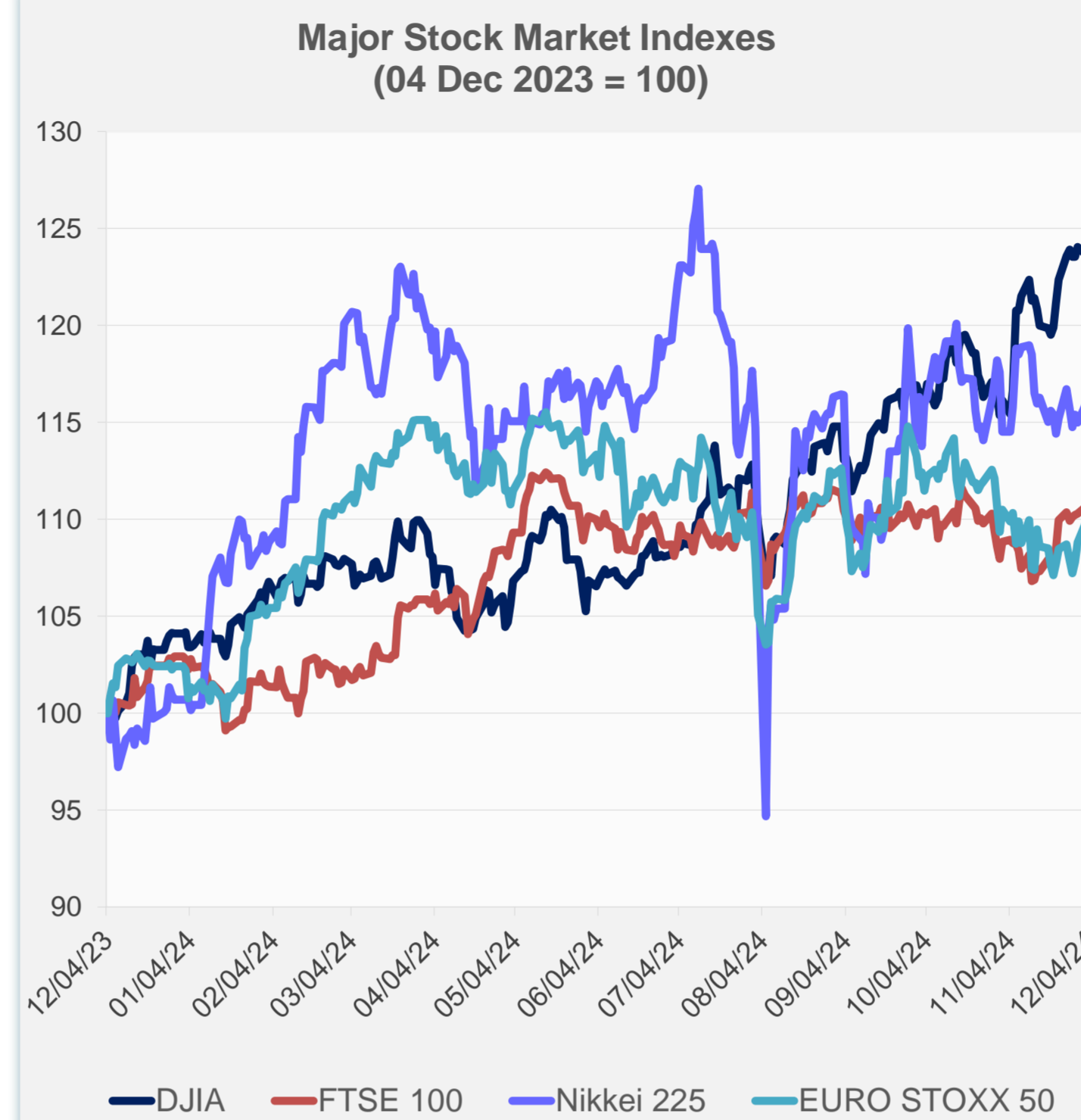


Source: Haver Analytics.

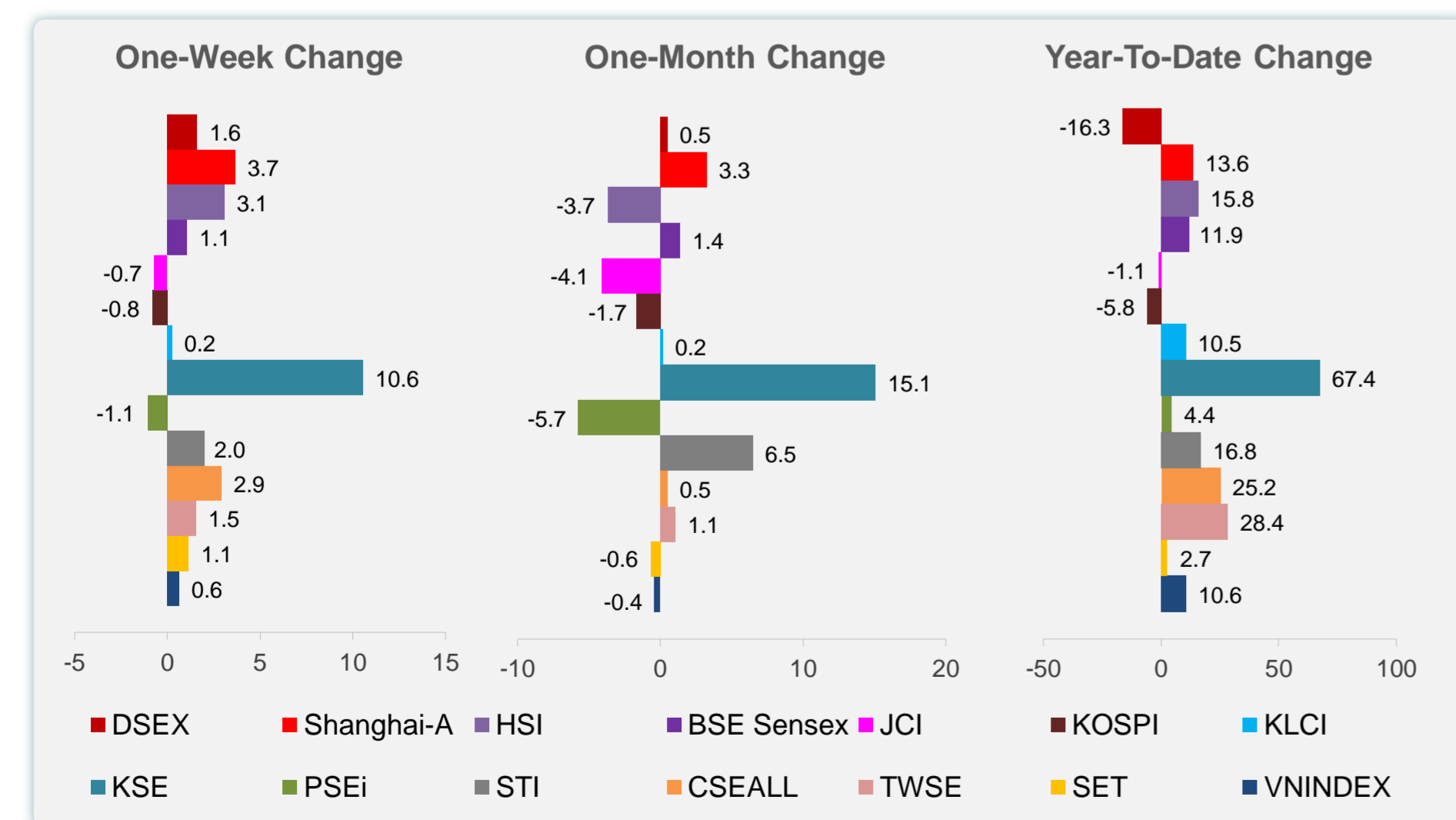
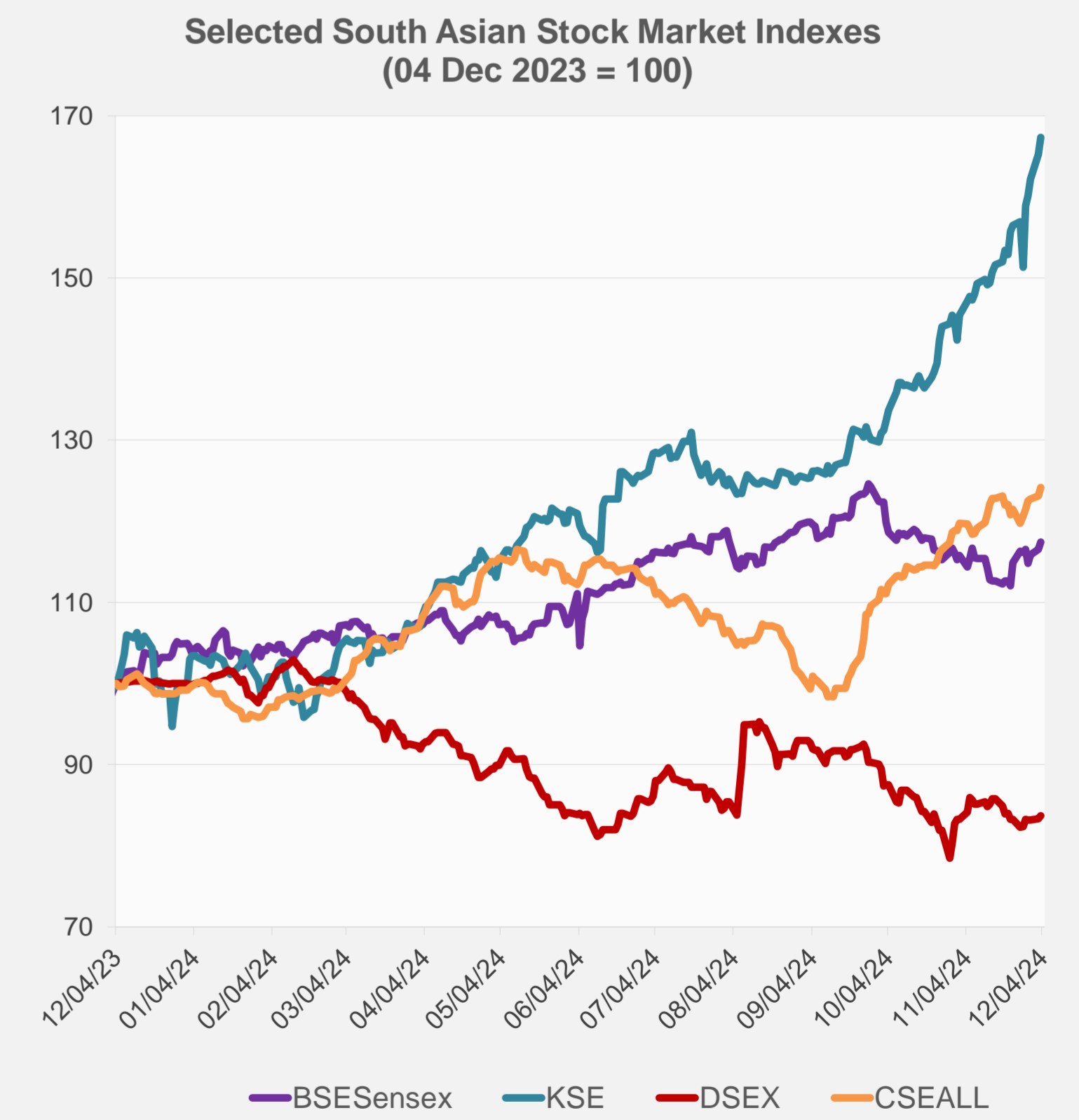
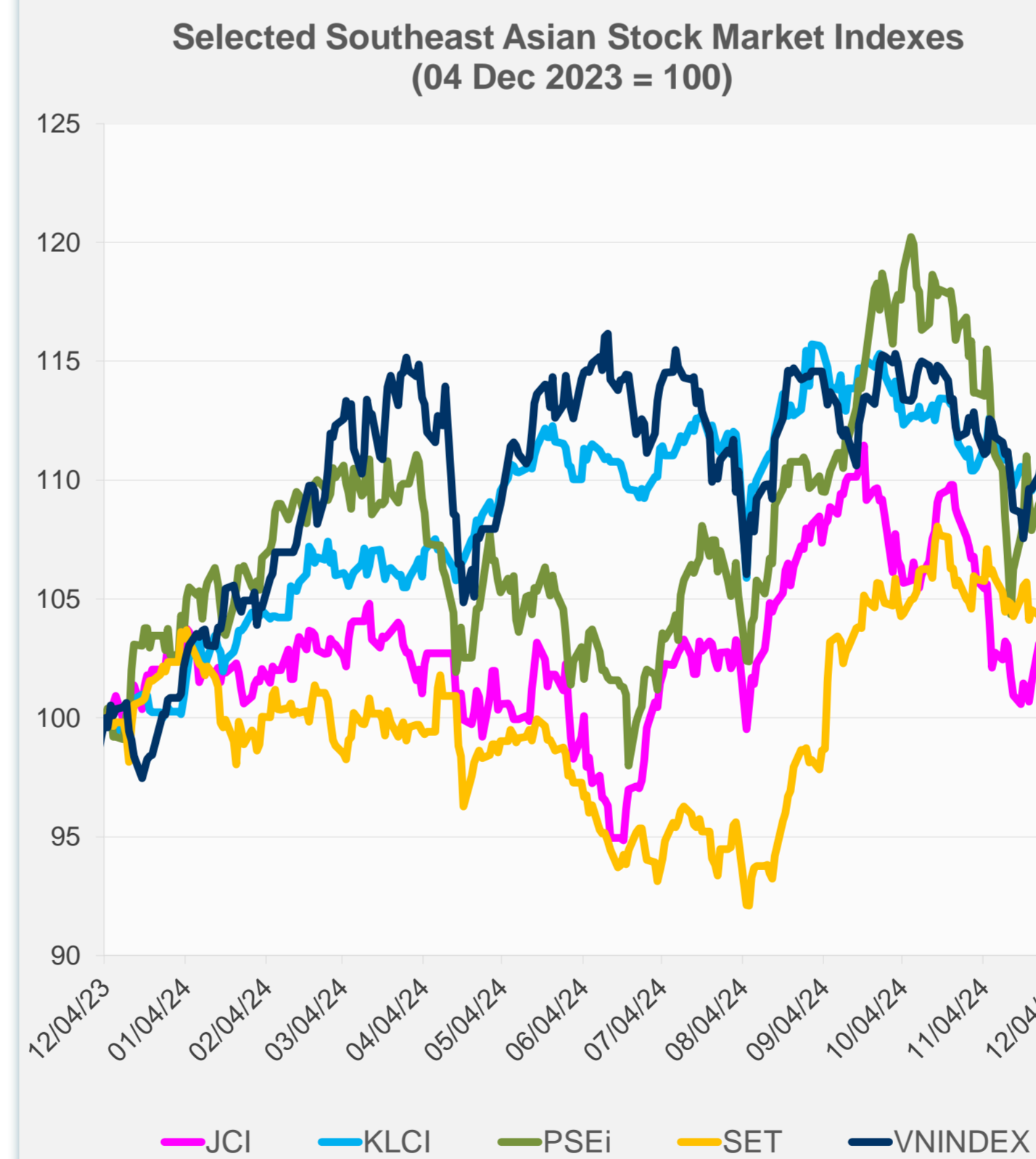
Daily Market Watch STOCK INDEXES

4 December 2024, 9:00 AM Manila

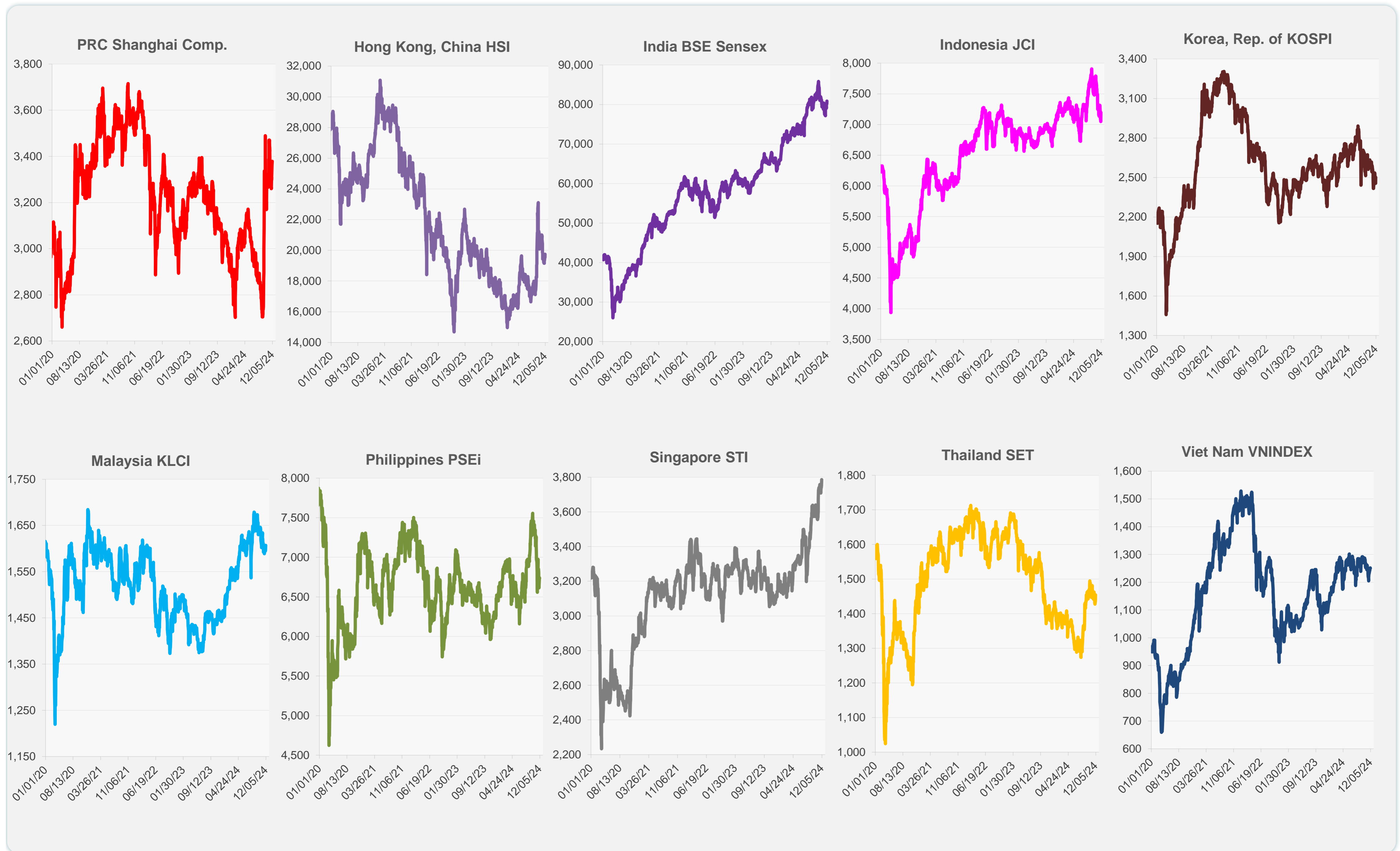
| | Latest Closing | % change from Previous Day | % change from 01-Jan-24 |
|----------------------|----------------|----------------------------|-------------------------|
| US Dow Jones Ind Avg | 44,705.53 | -0.17 | 18.62 |
| US NASDAQ | 19,480.91 | 0.40 | 29.77 |
| US S&P 500 | 6,049.88 | 0.05 | 26.84 |
| UK FTSE 100 | 8,359.41 | 0.56 | 8.10 |
| EURO STOXX 50 | 4,878.51 | 0.66 | 7.90 |
| Japan NIKKEI 225 | 39,248.86 | 1.91 | 17.29 |
| Bangladesh DSEX | 5,226.05 | 0.46 | -16.29 |
| PRC Shanghai Comp. | 3,378.81 | 0.44 | 13.58 |
| Hong Kong, China HSI | 19,746.32 | 1.00 | 15.83 |
| India BSE Sensex | 80,845.75 | 0.74 | 11.86 |
| Indonesia JCI | 7,196.02 | 2.11 | -1.06 |
| Korea, Rep. of KOSPI | 2,500.10 | 1.86 | -5.84 |
| Malaysia KLCI | 1,606.96 | 0.72 | 10.47 |
| Pakistan KSE 100 | 104,559.07 | 1.24 | 67.43 |
| Philippines PSEi | 6,734.21 | -0.13 | 4.41 |
| Singapore STI | 3,786.13 | 0.93 | 16.85 |
| Sri Lanka CSEALL | 13,340.04 | 0.84 | 25.21 |
| Taipei, China TWSE | 23,027.46 | 1.28 | 28.42 |
| Thailand SET | 1,454.76 | 1.23 | 2.75 |
| Viet Nam VNINDEX | 1,249.83 | -0.11 | 10.61 |



NIE = Newly Industrialized Economies



Sources: ADB calculations using data from CEIC Data Company and Haver Analytics.



Sources: CEIC Data Company and Haver Analytics.

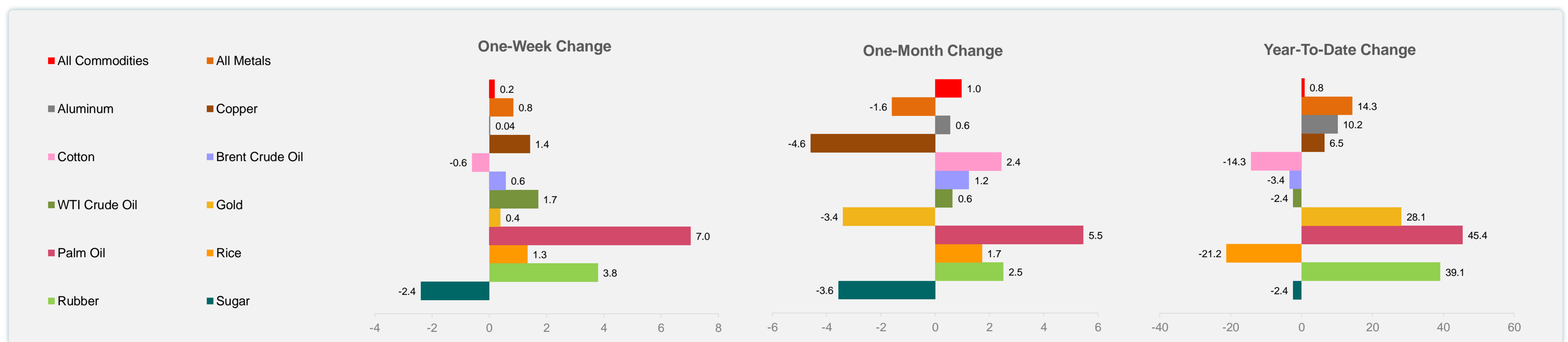
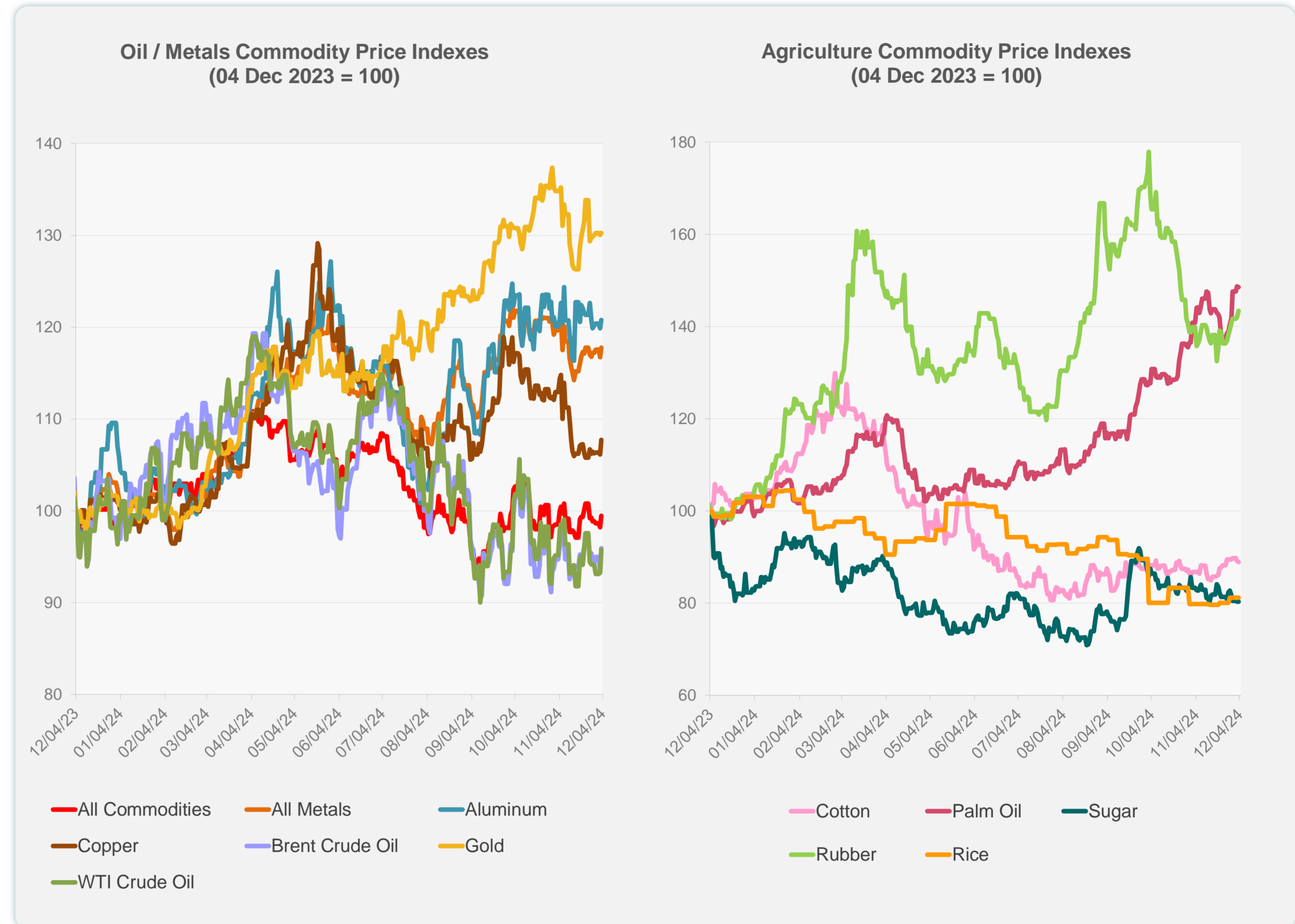
Daily Market Watch
COMMODITY PRICES

4 December 2024, 9:00 AM Manila

| | Unit | Latest Closing | % change from Previous Day | % change from 01-Jan-24 |
|---------------------|-------------------|----------------|----------------------------|-------------------------|
| S&P All Commodities | US\$ | 540.02 | 1.26 | 0.82 |
| S&P All Metals | US\$ | 317.01 | 0.86 | 14.27 |
| Aluminum | US\$/metric ton | 2,584.60 | 0.73 | 10.19 |
| Copper | US\$/metric ton | 9,010.21 | 1.53 | 6.45 |
| Cotton | US cents/lb | 67.27 | -0.33 | -14.31 |
| Brent Crude Oil | US\$/barrel | 75.00 | 2.65 | -3.36 |
| WTI Crude Oil | US\$/barrel | 69.94 | 2.70 | -2.39 |
| Gold | US\$/troy oz | 2,643.49 | 0.17 | 28.14 |
| Palm Oil | US\$/metric tonne | 1,176.53 | -0.16 | 45.43 |
| Rice ¹ | US\$/metric ton | 531.00 | 0.00 | -21.22 |
| Rubber ² | US\$/kg | 240.80 | 0.96 | 39.11 |
| Sugar | US cents/lb | 19.98 | 0.00 | -2.39 |

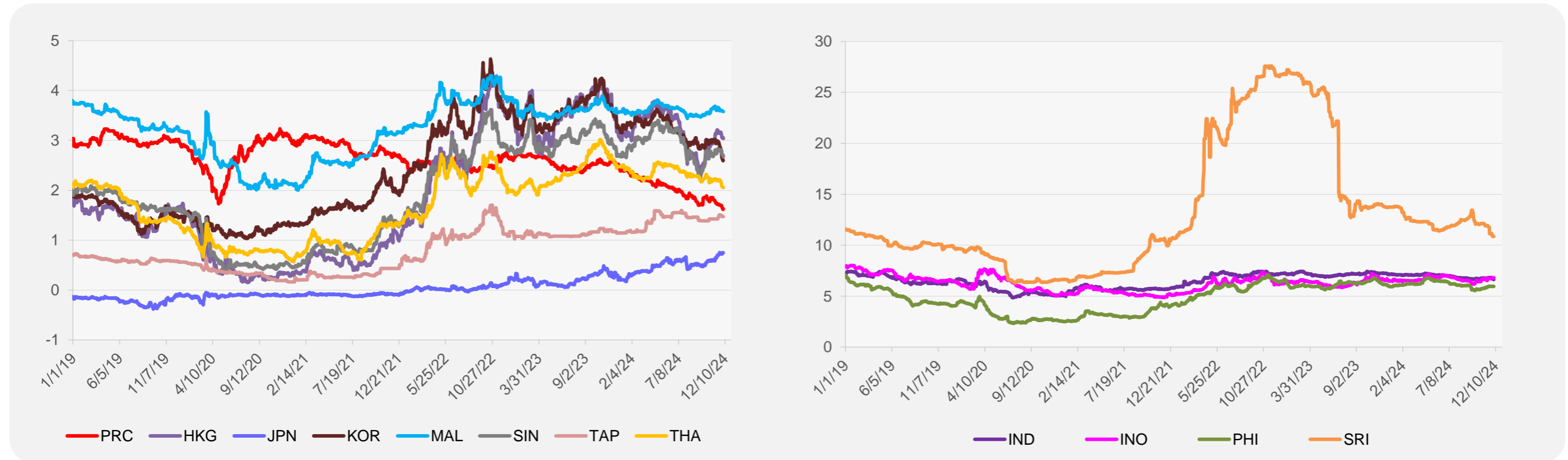
¹ Latest closing price from 27 November 2024.

² Singapore Exchange, Ribbed Smoked Sheet Rubber.

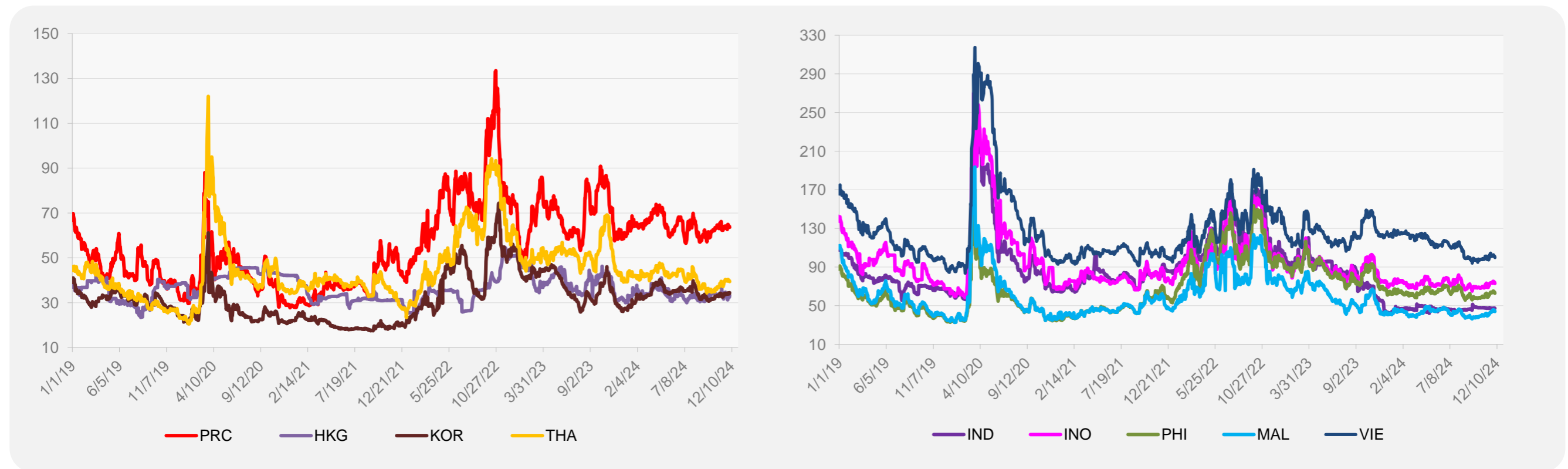


Source: ADB calculations using data from Bloomberg.

5-YEAR LOCAL CURRENCY GOVERNMENT BOND YIELDS (%)



5-YEAR CREDIT DEFAULT SWAP¹



¹ In USD and based on sovereign bonds.
Source: ADB calculations using data from Bloomberg.